

# **Place-based approach**

## presentation pack



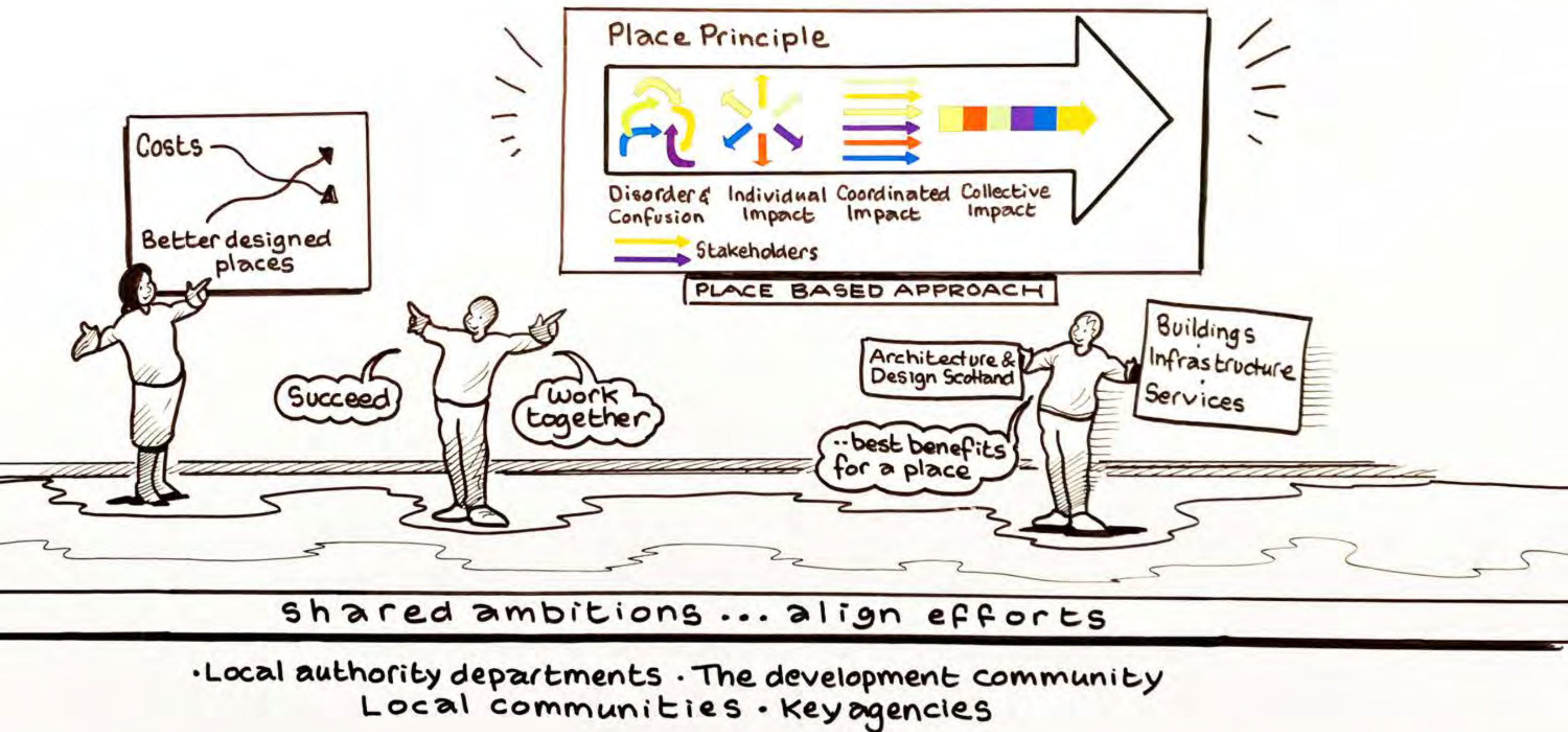
## Policy context

“National Planning Framework 4 (NPF4) recognises that Scotland in 2045 will be different. We must embrace and deliver radical change so we can tackle and adapt to climate change, restore biodiversity loss, improve health and wellbeing, reduce inequalities, build a wellbeing economy and create great places.”

“Local Development Plans should be place-based and created in line with the Place Principle”

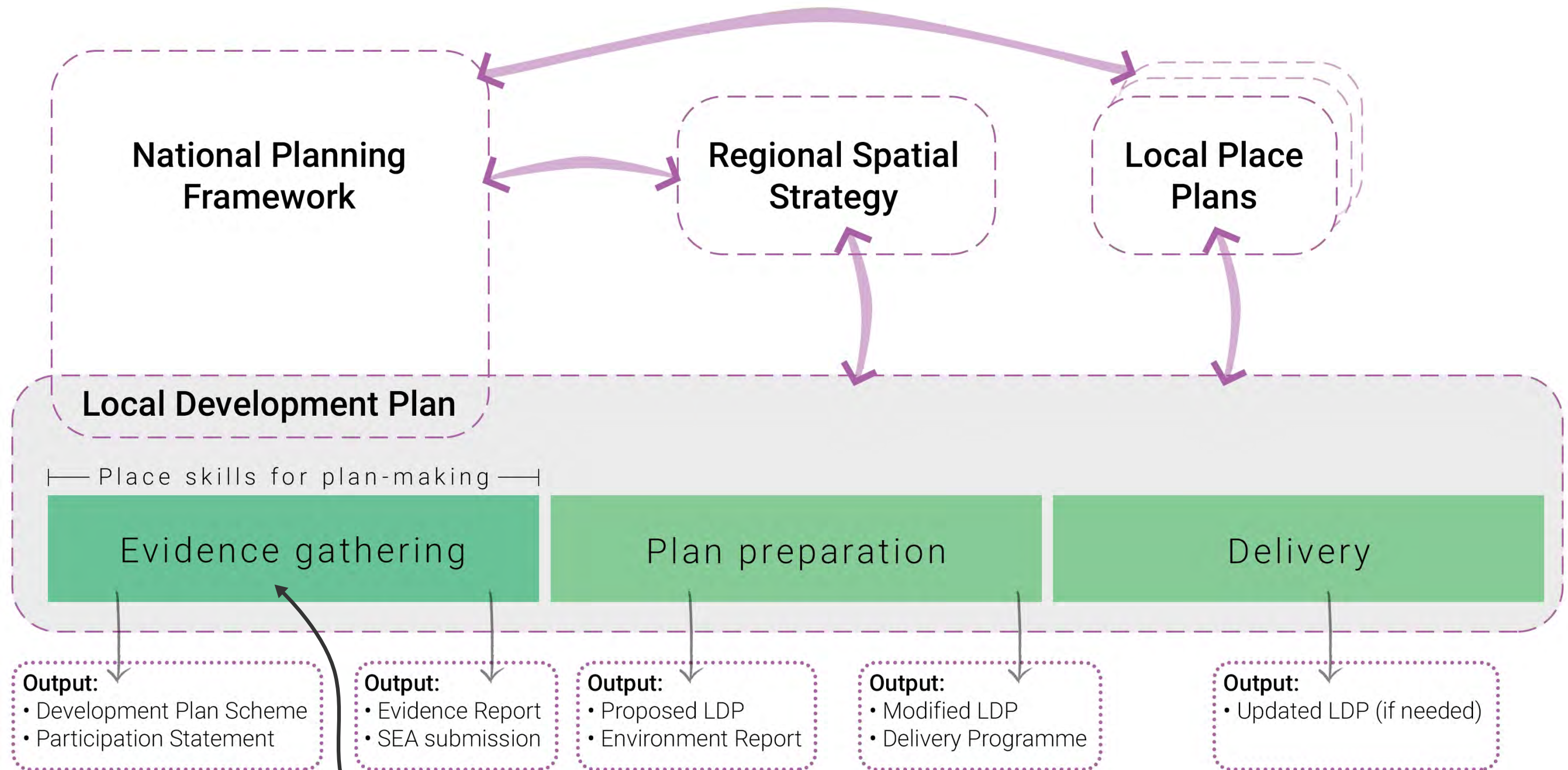
They should be prepared in a different way, look different and be used differently to before.”

# The Place Principle



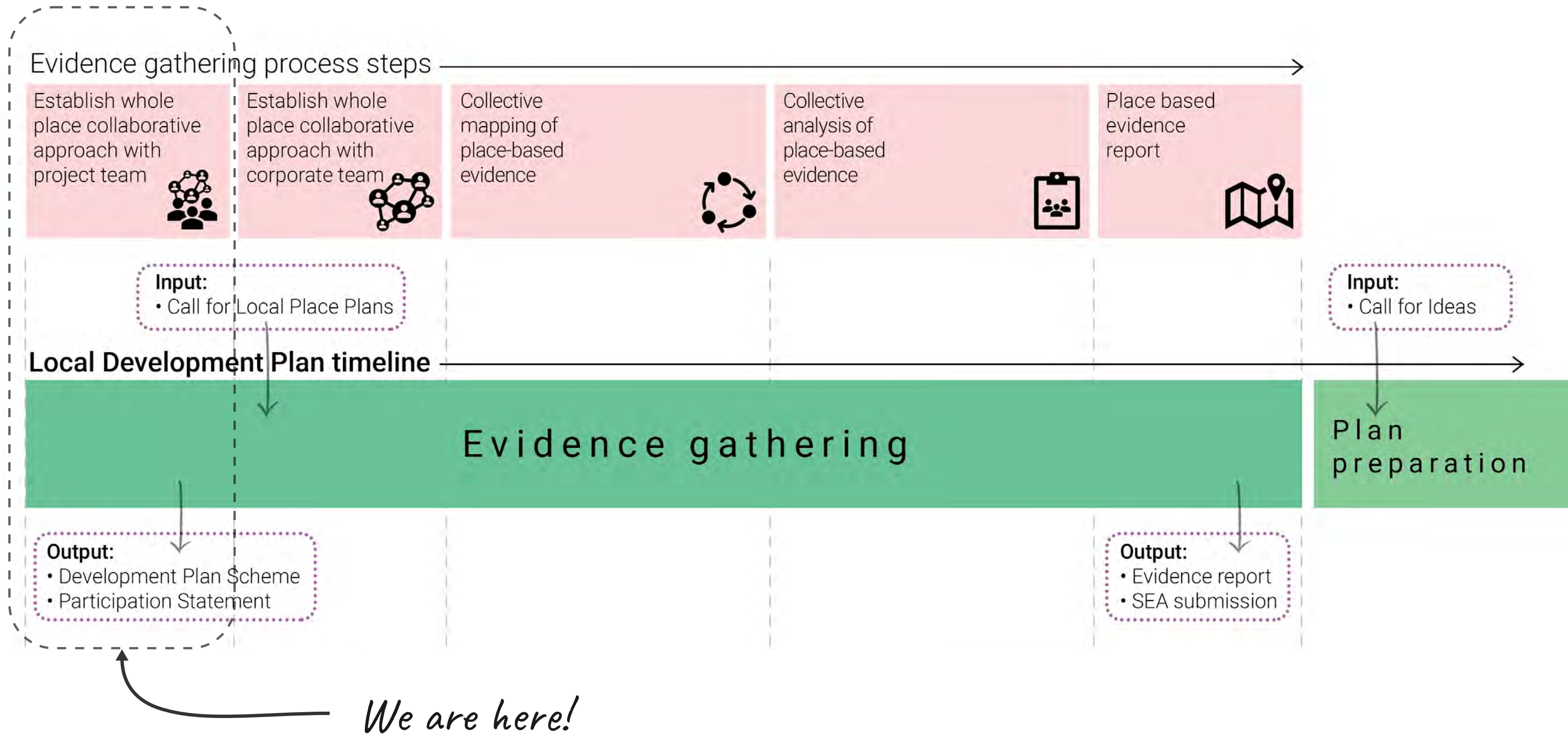


# Place-based Local Development Plan process



*We are here!*

# Evidence gathering process





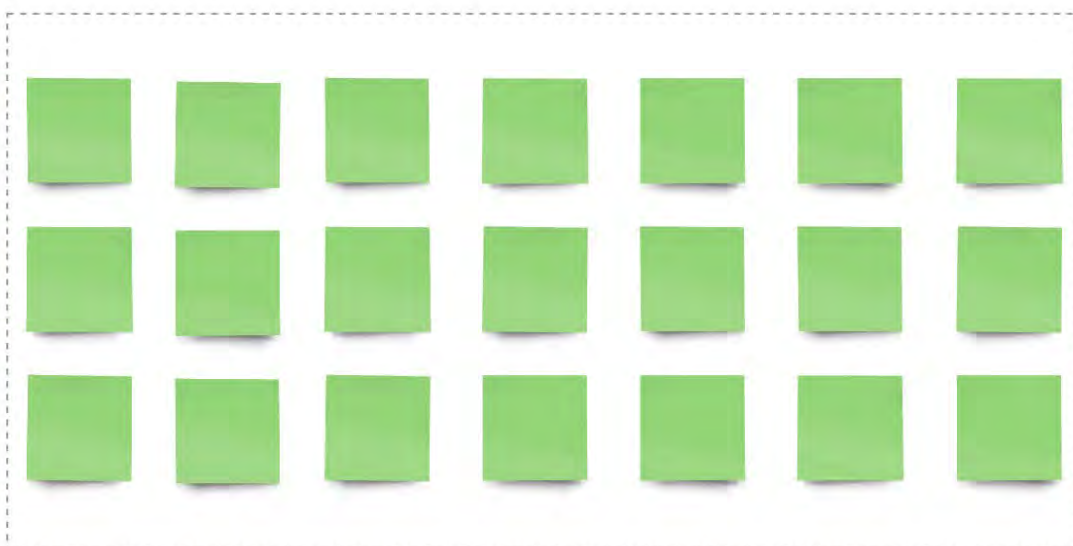


# Establish whole-place collaborative approach with project team — process examples

2.4

## Sharing successful examples of place-based working

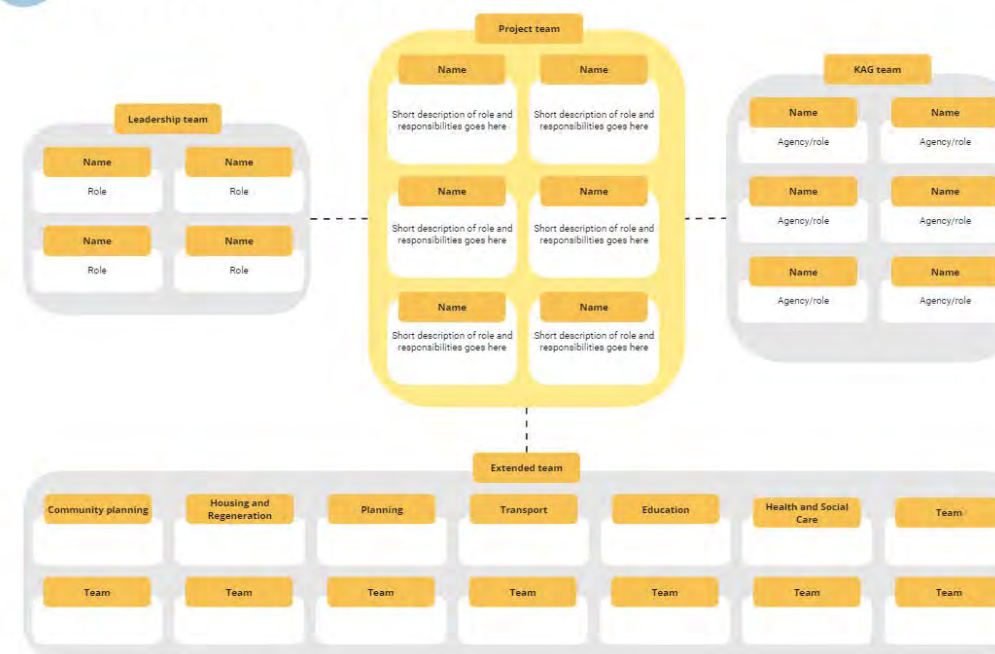
XX mins



3.1

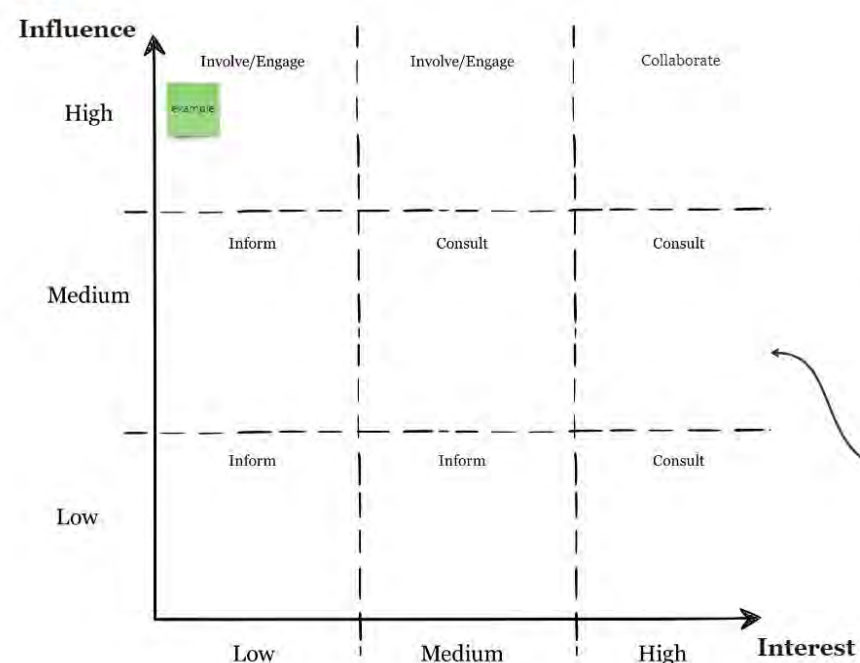
## Project team structure

XX mins



6.2

## Audience prioritisation



Place your sticky notes from the previous frame on this chart.

8.2

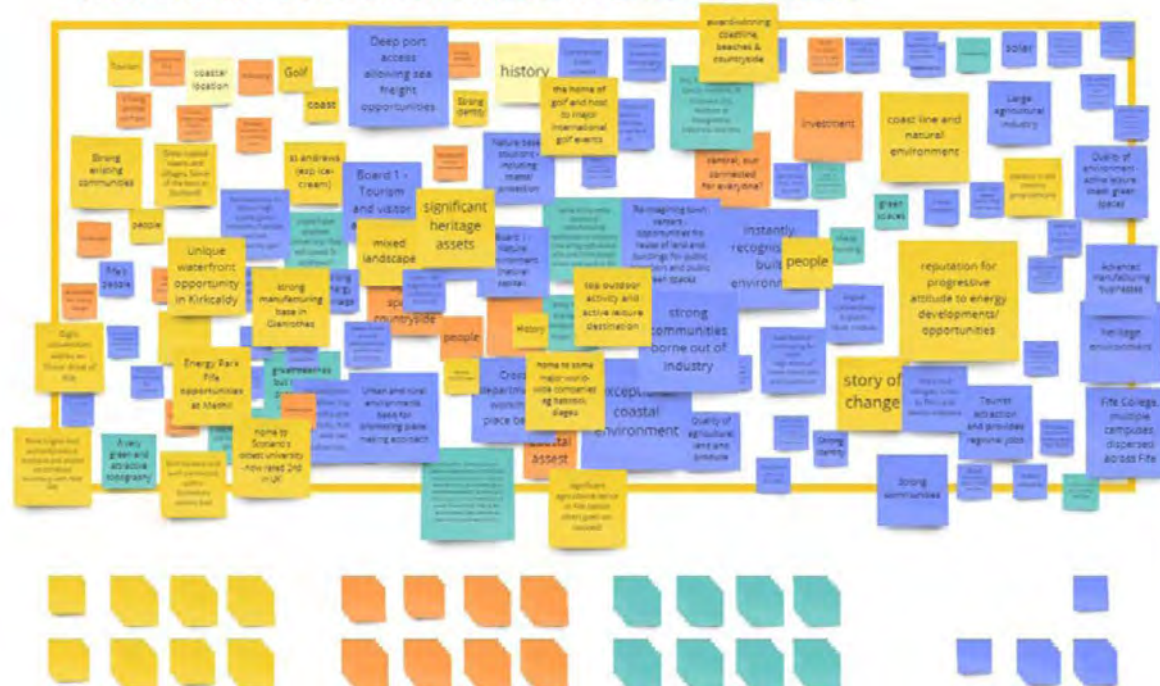
## Project timeline - activities and key milestones



Explanatory notes





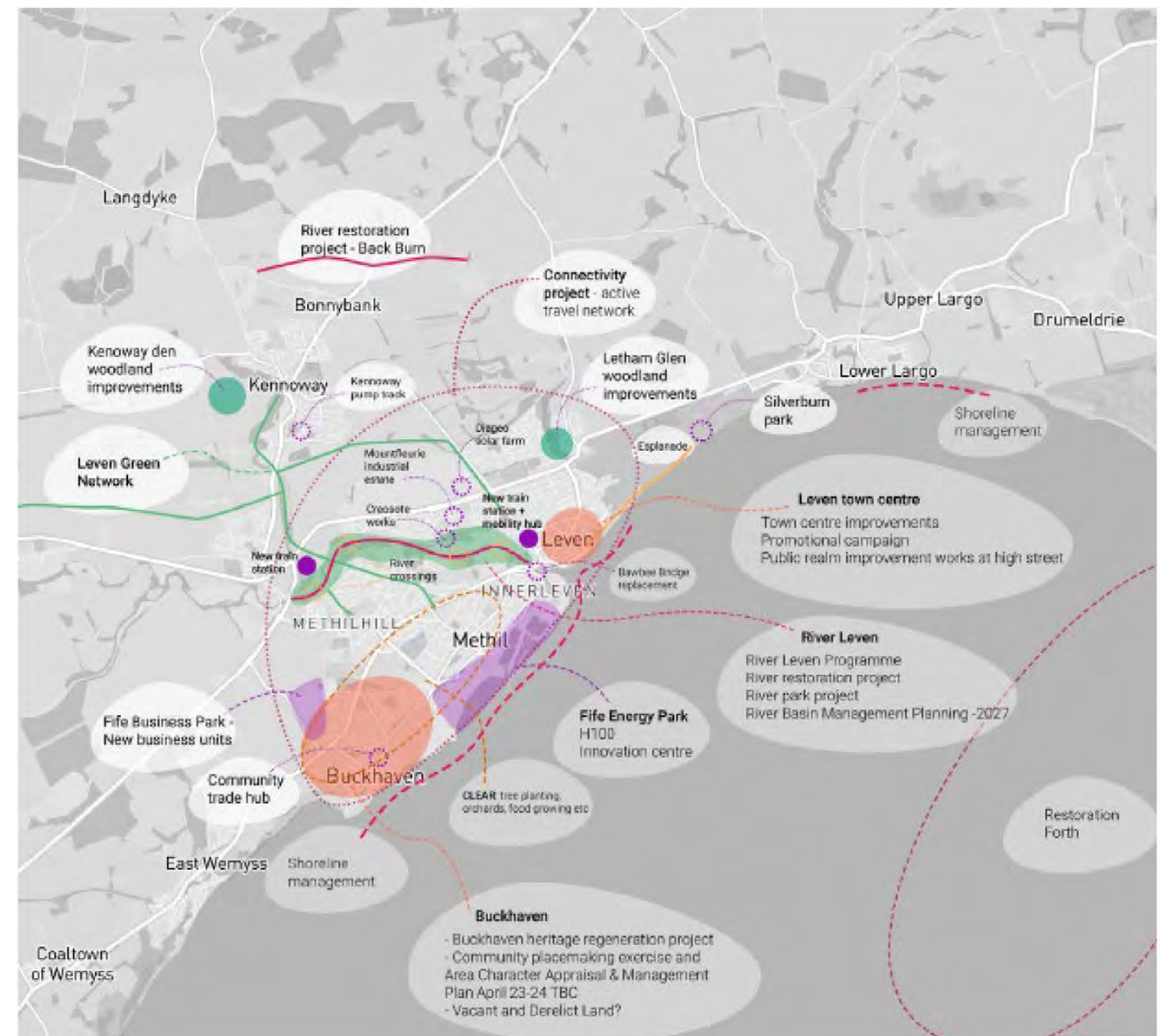


Having a brilliant trip to Fife. We just have to move to here, what an amazing place to live, beaches, countryside, great greenspaces, everything you need right on your doorstep and great links throughout the region. The place just seems to be buzzing and really progressive, there are green jobs here for all of us and the quality of life with Fife's net zero principles looks great.

policy and  
strategy  
alignment











# Collective analysis of place-based evidence — process examples



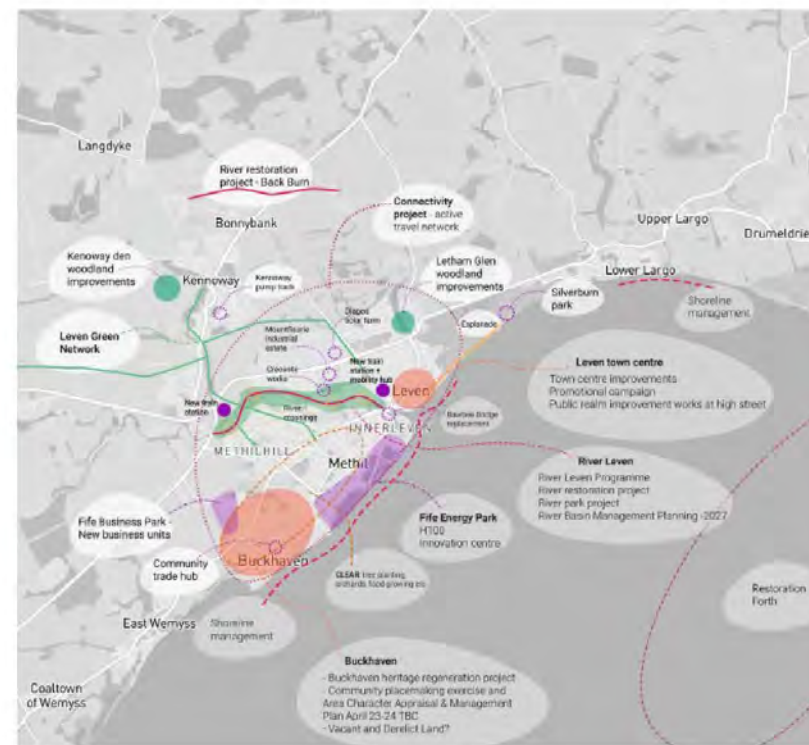
**Sustainable Places**



**Liveable Places**



**Productive Places**



## Implications for...

- plan outcomes
- infrastructure & services
- housing land
- employment land
- climate and environment





**A. Vision / Story of Change**

Ref Image Vote

1

2

3

4

**B. Whole Place Baseline Info**

Ref Image Vote

1

2

3

4

**C. Local Area Baseline Info**

Ref Image Vote

1

2

3

4

**D. Infographics & Diagrams**

Ref Image Vote

**E. Digital**

Ref Image Vote

5

9

10

11

12